



Meet the new Fleetwood generation.

NAME: Norm and Sally McKinley, Gil and Ruth Fenton

AGE: Who's counting?

OCCUPATION: Retired and loving life

OUTLOOK ON LIFE: *"Friends are fantastic. So is sharing things in common. Our passion is golf, and as in life, it has its bogies and birdies. But we've come to realize over the years that you never stop learning. One day you hit every fairway; the next you can't miss a 20-foot putt. And on rare occasions it all comes together—your game, your friends and your loved ones. Those are the days we remember. Those are the days that are special."*

MOTTO: *"Tee it up, keep your head down, and aim for the pin."*

MOTOR HOME: Fleetwood DISCOVERY®

Meet the new Fleetwood DISCOVERY®.

NAME: DISCOVERY®

PURPOSE: The nation's best-selling diesel motor home.*

SPECIFICATIONS: 3 floor plans - Two 37' models and one 38' model available • Freightliner® Chassis • 330 HP Caterpillar® engine • Power Platform • 50-amp electrical service with an Energy Management System • 7.5kW diesel generator • TuffCoat™ high-gloss fiberglass exterior • Royal Tuff-Ply™ roof

STANDARD FEATURES: Flush floor living room slide and new bedroom slide • Rack and pinion slide-out system • Quality Flexsteel® furnishings • 27" Panasonic® TV in front and 20" TV in the bedroom • Name brand appliances • 12-cu. ft. side-by-side Dometic® refrigerator • GE® convection microwave • Solid-surface countertops • Dual reclining captain's chairs • Tilt/telescoping steering wheel • Cruise control • Plus many quality safety features

MOTTO: "DISCOVERY®—Discover the very best life has to offer."



FLEETWOOD. RV

The World's #1 RV Manufacturer

* According to Statistical Surveys, Inc. - May 2001

Features for 2002 Discovery

Our engineering may set us apart from the rest, but the things you'll notice most when you and your family take a trip are the top-of-the-line features. Here are just a few of the items that make life on the road with Discovery more enjoyable.

The single-lever galley faucet with retractable wand makes rinsing and washing up convenient and easy.



Ample storage and even a standard coffeemaker—everything you need for a great adventure.



At-home comfort extends to the bath area with large residential sink and wood cabinetry.



The exclusive Energy Management System intelligently controls the 50-amp electrical system, assigning power where needed most.



The rotocast storage compartments are tough, durable and easy to clean.



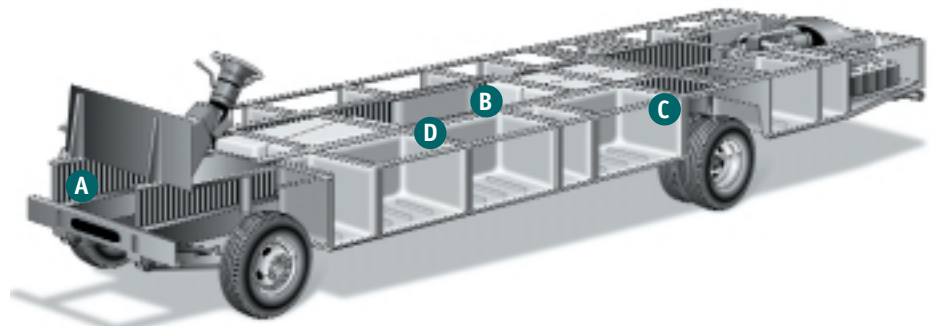
The optional washer/dryer is simply the ultimate in convenience.



Custom window treatments are specially designed to allow easy access to the day/night shades.

The Diesel Power Platform Makes the Difference

Discovery's quality begins long before the features come on board. We take a Freightliner® chassis with air-ride suspension, exhaust brakes and a whopping 330 horsepower Caterpillar® engine. Then we add our patented Power Platform foundation. Stronger and more durable than ordinary designs, it lets you pack more and enjoy a hushed, smooth ride.



- A** Steel I-beams are welded the length of the chassis for enormous weight-bearing ability.
- B** Water tanks run horizontally down the center of the frame for balance.
- C** Beefy steel outriggers firmly cradle all exterior compartments.
- D** A neoprene rubber gasket isolates the living area from the chassis for a quieter ride.

Drawing is for illustrative purpose only to highlight aspects of motor home construction. Actual motor home design depends on model and is subject to change.



2002 Discovery Standard Features

Appliances

- Front 27" Panasonic® Stereo TV in Overhead
- Rear 20" Panasonic® TV
- Hi-Fi VCR
- Smoke Detector/Alarm
- LPG Detector/Alarm
- CO Detector/Alarm
- 20,000 BTU/25,000 (Dual) Furnace
- 10-Gallon, Quick-Recovery Water Heater with D.S.I. (Gas/Electric)
- 3-Burner, High-Output Cooktop w/Sealed Burners
- Light/Power Range Hood (Integrated into Microwave)
- Monitor Panel in Front Overhead
- Solid Surface Range Cover
- Dual Roof A/C High Efficiency w/Solar Panel on Front A/C
- Water Heater Bypass System
- Porcelain Toilet with Water Saver
- Toilet Tank San-T-Flush™ System
- 1.4-cu. ft. GE® Convection Microwave
- 12-cu. ft. Side-by-Side Dometic® Refrigerator
- Single-Lever Galley Faucet with Retractable Wand
- Water Filter with Faucet
- Demand Water Pump with Filter
- TV Antenna
- Fan-Tastic® Power Roof Vent – Galley and Bath
- Fire Extinguisher
- Telephone Jack in Living Area and Bedroom
- Rear Speakers in Bedroom
- Coffeemaker

Body Structure

- Vacubond Upper/Lower Floors
- Vacubond Walls with Smooth High-Gloss Exterior Fiberglass
- Radius Roof with Ducted A/C
- Royal Tuff-Ply™ Roof
- Aluminum Interlocking Floor/Wall/Ceiling Framing

Electrical

- Doorside Patio Receptacle
- 120V/12V AC/DC Converter with 2000-Watt Inverter
- Central Electrical Panel
- 120V/12V Wire Raceways
- 3-Way Water Pump Switch
- 7.5kW Onan® Quiet Diesel Generator
- 50-amp Service
- Wall Switches
- EMS – Energy Management System
- Four 6V/Deep-Cycle 218-amp House Batteries

Exterior

- Fiberglass Front/Rear Cap
- Fiberglass Front Quarter Panels
- Fiberglass Rear Wheel Well Trim
- Aerodynamic Styling

Exterior (cont.)

- Entry Door with Deadbolt Latch
- Slider Windows
- Torque Windows in Bedroom
- Utility Compartment with Exterior Shower
- 4-Point Manual Hydraulic Levelers
- Roof Ladder
- Exterior Entry Assist Handle
- Remote Heated Rear View Mirrors
- 20' Sewer Hose
- Park Cable Receptacle
- Awning Rail/Drip Molding (Both Sides)
- Power Entry Step
- Dual Battery Charge Control
- Porch Light
- 3 Colorway Graphics to Match Decor

Exterior Automotive

- Large, Curved Aerodynamic Bonded in Windshield
- Undercoating
- Stainless Steel Wheel Simulators
- Valve Extenders
- Underhood Utility Light
- Steel Surface on Bulkhead
- Trailer Hitch with 7-Point Electrical Hook-Up*
- Large Headlamps with Turn Signal
- Rear Vision Camera
- Single Motor Windshield Wipers with Wet Arm
- Mud Flaps
- Fog Lamps
- Freightliner® Chassis
- 330 HP Caterpillar® Engine

Exterior Storage

- Insulated Aluminum Luggage Doors
- Single-Paddle/Metal Latches
- Continuous One-Piece Bulb Seal
- Hidden, Stainless Steel Latch Rods
- Hidden Lift Strut Supports
- Lighted Compartments
- Rotomolded Compartments

Interior

- 3 Interior Decors
- Skylight in Tub/Shower
- Glass Shower Door
- Alder with Cherry Finish Wood Grain
- Printed Plush Wall-to-Wall Carpet w/Carpet Pad
- Wood Drawers
- Roller Guide Drawer Slides with Transit Ship Locks
- Cedar Lining in Wardrobe
- Radius Corner Cabinetry
- Coordinated Cabinet Hardware
- Pleated Day/Night Shades
- Bedspread with Decor Pillows

Interior (cont.)

- Restonic® Pillow Top Innerspring Mattress
- Hardwood Cabinet Doors & Drawers
- Solid Surface Countertops in Galley & Lavy
- Crown Molding
- Laminate Floor Tile in Galley & Bath
- Headboard (When Applicable)
- Beveled Mirrors
- Slide-Out Dinette Bins with Locks
- Hardwood Bath Door/Trims
- Wood Trim Table Tops (Dinette & Nightstands)
- Trash Basket in Galley
- Molded Tub/Shower with One-Piece Enclosure
- Coordinated Bath Accessories
- Residential Seat Styling
- Entry Rail
- Hardwood Raised-Panel Cabinet Doors
- Adjustable Cabinet Shelves (Selected Cabinets)
- Sink Covers
- Solid Divider Doors
- Large, Double Porcelain Sink in Galley
- Porcelain Bowl in Lavy
- J-Lounge Sofa (38D only)

Interior Automotive

- Intermittent Wiper Control
- Multi-Function Sun Visors
- Cruise Control
- AM/FM/CD Radio
- Auxiliary Start Circuit
- Battery Shut-Off Switch
- Auto A/C Heater Combo
- Radio Switch–Main/Auxiliary Power
- Soft-Surface Automotive Dash
- Driver/Passenger Captain's Chairs with Reclining Back/Slide Controls
- Dash Fans
- Tilt/Telescoping Steering Wheel
- 3-Point Seat Belts on Driver/Passenger Seats

Interior Lighting

- Wardrobe Lighting
- Fluorescent Lighting
- Decor Lighting
- Incandescent Lighting
- Wall Sconces
- Make-Up Lights in Bath
- Bedroom Lighting

Platform Construction

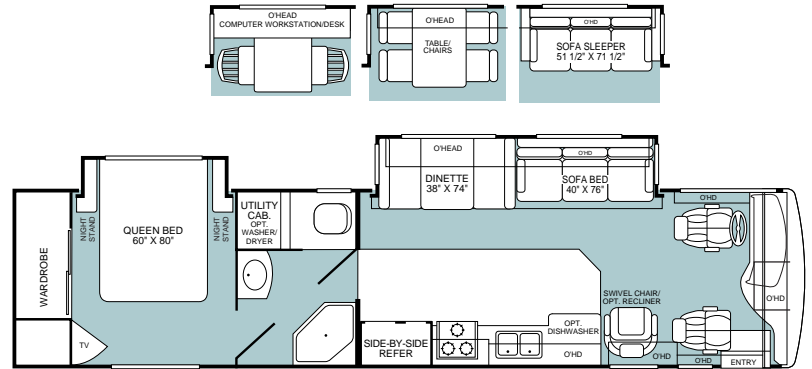
- Basement Floor Configuration
- Heated Water & Holding Tank Compartments
- Polyethylene Luggage Compartment Boxes
- Power Platform
- Coach Vibration Isolators

* The chassis manufacturer recommends the installation of a supplemental brake control system to activate the brakes on the vehicle or trailer you are towing.

2002 Discovery Floor Plans

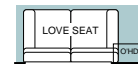
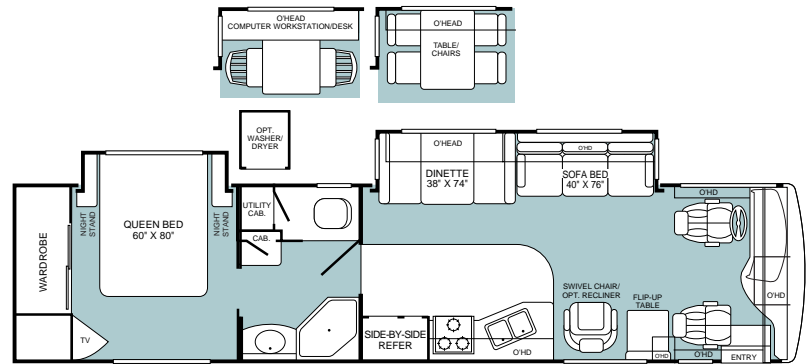
Model 37T

- Living Room Slide-Out
- Dinette or Optional Table with Chairs or Computer Workstation
- Optional Dishwasher
- Side-by-Side 12-cu. ft. Dometic® Refrigerator
- Optional Washer/Dryer
- Bedroom Slide-Out with Queen Bed
- Large Wardrobe



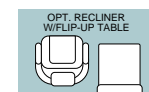
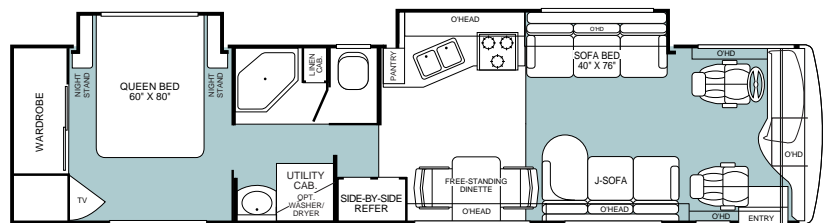
Model 37U

- Living Room Slide-Out
- Dinette or Optional Table with Chairs or Computer Workstation
- Swivel Chair or Optional Recliner or Love Seat
- Side-by-Side 12-cu. ft. Dometic® Refrigerator
- Optional Washer/Dryer
- Bedroom Slide-Out with Queen Bed
- Large Wardrobe



Model 38D

- Galley/Living Room Slide-Out
- J-Lounge Sofa or Optional Recliner with Flip-Up Table
- Free-Standing Dinette
- Side-by-Side 12-cu. ft. Dometic® Refrigerator
- Optional Washer/Dryer
- Bedroom Slide-Out with Queen Bed
- Large Wardrobe





2002 Discovery Options

Appliances	37T	37U	38D
3-Burner Range with Oven	OPT	OPT	OPT
Washer/Dryer	OPT	OPT	OPT
Central Vacuum System	OPT	OPT	OPT
DSS Manual Lift/Satellite Dish	OPT	OPT	OPT
Norcold® 4-Door Refrigerator w/Ice Maker	OPT	OPT	OPT
Dishwasher	OPT	N/A	N/A
Electrical			
CSA Package	OPT	OPT	OPT
Exterior			
Awning—USA (Manual or Power)	OPT	OPT	OPT
Front Mask	OPT	OPT	OPT
Aluminum Rim	OPT	OPT	OPT
Spotlight with Remote Control	OPT	OPT	OPT
Roof Mount Chrome Air Horn	OPT	OPT	OPT
Interior Automotive			
CB Radio Ready	OPT	OPT	OPT
Stereo AM/FM with CD Player	OPT	OPT	OPT
Ultraleather™/Heated/Power—Driver and Passenger Seats	OPT	OPT	OPT
Bedroom Radio	OPT	OPT	OPT
Interior			
Ultraleather™ J-Lounge Sofa	N/A	N/A	OPT
Ultraleather™ Sofa Bed	OPT	OPT	OPT
Ultraleather™ Swivel Recliner	OPT	OPT	OPT
Free-Standing Dinette with Chairs	OPT	OPT	STD
Panasonic® 5-Disc DVD Home Theater Sound System	OPT	OPT	OPT
Walnut Wood Grain	OPT	OPT	OPT
Love Seat	N/A	OPT	N/A
Computer Workstation at Dinette	OPT	OPT	N/A
Slide-Out			
Galley—Galley/Sofa	N/A	N/A	STD
Living Room—Dinette/Sofa	STD	STD	N/A

N/A: Some options not available on all models. See your dealer for complete information.

2002 Discovery Specifications

Freightliner® Chassis	37T	37U	38D
Engine Liters	7.2L	7.2L	7.2L
Wheelbase	242"	242"	252"
GVWR (lbs) (1)	26,500	26,500	26,500
Front GAWR (lbs) (2)	9,500	9,500	9,500
Rear GAWR (lbs) (2)	17,000	17,000	17,000
Base Weight (lbs) (3)	21,400	21,400	21,600
GCWR (lbs) (4)	31,500	31,500	31,500
Hitch Rating (lbs)*	5,000	5,000	5,000
Tongue Weight (lbs)*	500	500	500
Fuel Capacity (gal)	90	90	90

Dimensions and Capacities			
Overall Length (5)	37' 10"	37' 10"	38' 8"
Overall Height (with A/C)	12' 1"	12' 1"	12' 1"
Overall Width (maximum) (6)	102"	102"	102"
Interior Height (maximum)	79"	79"	79"
Interior Width (maximum)	96"	96"	96"
Fresh Water Holding Tank (gal)	80	80	80
Grey Water Holding Tank (gal)	65	65	65
Black Water Holding Tank (gal)	50	50	50
Appliance LPG Tank (gal) (WC) (7)	24	24	24
Water Heater Tank (gal)	10	10	10

Liquid Weight Reference	Water (gal) = (8.3 lbs/3.8 kgs)	Fuel (gal) = (7.1 lbs/3.2 kgs)	LPG (gal) = (4.5 lbs/2.0 kgs)
Metric Conversion	Multiply pounds x 0.453 to obtain kilograms		Multiply gallons x 3.785 to obtain liters

- GVWR (Gross Vehicle Weight Rating): Means the maximum permissible loaded weight of the motor home. The GVWR is equal to or greater than the sum of the unloaded vehicle weight plus the net carrying capacity.*
- GAWR (Gross Axle Weight Rating): Means the maximum permissible loaded weight a specific axle is designed to carry.*
- Base Weight: Means the weight of the motor home without fuel, options, water, cargo or passengers.*
- GCWR (Gross Combined Weight Rating): Means the value specified by the motor home manufacturer as the maximum allowable loaded weight of this motor home with its towed vehicle. Towing and braking capacities may differ. Refer to Fleetwood and chassis manufacturer manuals for complete information.*

- Overall length measured from forward most body point or bumper to rear most body point or rear bumper. Add 8" for rear ladder.*
- Excludes safety equipment and awnings.*
- Tank Manufacturer's listed water capacity (WC). Actual LPG capacity is 80% of water listing as required by the safety code.*
- * The chassis manufacturer recommends the installation of a supplemental brake control system to activate the brakes on the vehicle or trailer you are towing.*

IMPORTANT—PLEASE READ: Product information, photography and illustrations included in this publication were as accurate as possible at the time of printing. For further product information and changes, please visit our website at www.fleetwoodrv.com or contact your local Fleetwood dealer. Prices, materials, design and specifications are subject to change without notice. All weights, fuel, liquid capacities and dimensions are approximate. Fleetwood has designed its recreational vehicles to provide a variety of uses for its customers. Each vehicle features optimal seating, sleeping, storage and fluid capacities. The user is responsible for selecting the proper combination of loads (i.e. occupants, equipment, fluids, cargo, etc.) to ensure that the vehicle's capacities are not exceeded.

Why would you buy anything else?

FLEETWOOD® RV

For every road you travel, Fleetwood has the RV to fit your high standards and lifestyle. We build the recreational vehicles America wants, accounting for nearly one out of every three RVs on the road today. How do we do it? We call it the **Fleetwood Equation**.

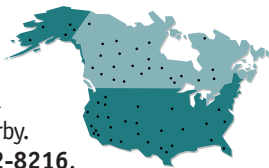
Size + Service + Quality = Value!

Size *The world's #1 RV manufacturer*

For over a half-century Fleetwood has grown to become the **largest manufacturer of recreational vehicles in the world**. And stands today as the only RV manufacturer in the **Fortune 500**. You won't find our nearest competitor in even the top 1,000. Fleetwood remains, year after year, the largest, most influential, innovative and recognized leader in the RV industry.

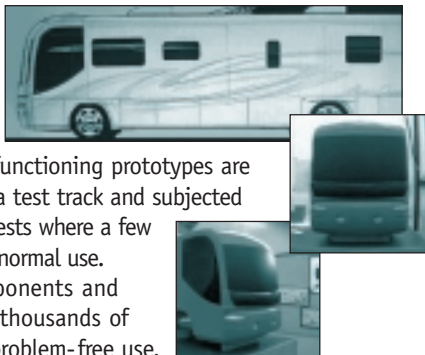
Service *Listening to our customers*

With over **1,100 service dealers in the US and Canada**, Fleetwood has the **largest network in the RV industry**. No other RV company comes close in equaling this vital customer support system. Fleetwood RV service dealers have instant, real-time electronic access to your service records as well as parts inventory and warranty repair authorization inquiries. We also provide a 24-hour customer call center for service and product information so no matter where you travel in North America, professional support and fast answers are always nearby. Call toll free 24 hours a day: **1-800-322-8216**.



Quality *Using only the best materials*

At Fleetwood, quality begins at the design stage so every coach is built right, right from the start. Subsequent to design approval, full-functioning prototypes are built, then punished on a test track and subjected to accelerated life cycle tests where a few weeks can equal years of normal use. At the same time, components and systems are test-cycled thousands of times assuring years of problem-free use.



Once approved for production, each unit is built by skilled technicians using quality materials and components, many of which are sourced through, or manufactured by, our subsidiary companies such as Gold Shield Fiberglass and Continental Lumber Products.



Fleetwood engineers specify the very best products and appliances from companies such as Coleman®, Dometic®, Flexsteel®, Ford®, Freightliner®, Magic Chef®, Panasonic®, and Workhorse®. Companies that are experts in their respective fields and play a significant role as partners, not just suppliers.

All this assures that every Fleetwood RV has the fit, finish and details required by our high standards—as well as yours.

Value *Priced right with style*

At Fleetwood RV, we look at value as the sum of everything we offer.

- **Value** is our design, engineering expertise, and innovative manufacturing methods.
- **Value** is structures and components that are the best in the industry, that meet or exceed government and industry safety standards.
- **Value** is Ownercare — a one-year/three-year warranty with coverage from a company that will be around in the future to service your needs. Ownercare is one of the RV industry's most comprehensive programs and includes systems and applications, construction, no deductible and no service charge. And it is fully transferable for the first 12 months. See your nearest Fleetwood dealer for a full explanation of benefits and restrictions.
- **Value** is customer satisfaction. When asked, more experienced RV owners would recommend Fleetwood to a friend than any other brand. Fleetwood RVs consistently hold their value better than most RVs at trade-in time.



Value is peace of mind.

SSQV—Size, Service, Quality, and Value. Together they equate to the very best RV you can buy, and the reason you should purchase a Fleetwood over any other brand.

Require these features when you purchase your next RV... Fleetwood does!

See you on the road!

Limited One-Year/Three-Year Warranty

For Motor Homes Manufactured by subsidiaries of Fleetwood Enterprises, Inc., sold in the United States and Canada

Coverage Provided

Your new motor home, including the structure, plumbing, heating, electrical systems, all appliances and equipment installed by the manufacturer, is warranted under normal use to be free from manufacturing defects in material or workmanship. Appearance imperfections or damage to paint, graphics, exterior materials, or upholstery that may have occurred prior to delivery are normally corrected during the inspection process at the manufacturing plant or at the dealership.

The warranty extends to the first retail purchaser and his transferee(s) and begins on the date of original retail delivery or the date the motor home is first placed into service as a rental, commercial or demonstrator unit (whichever occurs first). The warranty extends for the following periods:

1. For all defects (other than structural) the warranty extends for a period of one year from such date or until the unit has received 15,000 total miles of use as determined by the mileage shown on the odometer (whichever occurs first).
2. For structural defects, 3 years; structural defects are limited to the following: roof structure, sub-floor structure, exterior walls, interior walls and ceilings.

Written notice of defects must be given to the selling dealer or manufacturer not later than ten (10) days after the expiration of the warranty period.

Owner's Obligation

The owner is responsible for normal maintenance as described in the Owner's Information Package; however, minor adjustments (such as cabinet latches, TV antenna control, etc.) will be performed by the dealer during the first 90 days of warranty coverage. Thereafter, such adjustments are the responsibility of the owner as normal maintenance unless required as a direct result of repair or replacement of a defective part under this warranty.

If a problem occurs which the owner believes is covered by this warranty, the owner shall contact the selling dealer, or the Fleetwood Service Center, giving sufficient information to resolve the matter. The owner shall deliver the motor home to the dealer or the Fleetwood Service Center location for warranty service.

FLEETWOOD RV

The World's #1 RV Manufacturer

Fleetwood Enterprises, Inc. • RV Marketing • P.O. Box 7638 • Riverside, CA 92513-7638

Your local Fleetwood RV dealer is:

Dealer's Obligation

By agreement with the manufacturer, the dealer is obligated to maintain the motor home prior to retail sale, to perform a detailed predelivery inspection and to repair or replace any parts necessary to correct defects in material or workmanship.

When the Dealer Does Not Resolve the Problem

If the dealer is unable or unwilling to resolve a problem which the owner is convinced is covered by the warranty, the owner should contact the Fleetwood Service Center at the address listed below and provide the Fleetwood Service Center with a description in writing of the problem and attempts made to resolve it.

Manufacturer's Obligations

Upon receipt of notice of a claim, where the dealer was unable or unwilling to resolve the problem the Fleetwood Service Center will repair or replace any parts necessary to correct defects in material or workmanship or will take other appropriate action as may be required.

What is Not Covered By This Warranty

This warranty does not cover:

1. The automotive chassis system (including the chassis and drive train), tires and batteries, which are covered by the separate warranties of the respective manufacturers of these components.
2. Defects caused by or related to:
 - a. Abuse, misuse, negligence or accident;
 - b. Failure to comply with instructions contained in the Owner's Information Package;
 - c. Alteration or modification of the motor home;
 - d. Environmental conditions (salt, hail, chemicals in the atmosphere, etc.)
3. Normal deterioration due to wear or exposure, such as fading of fabrics or drapes, carpet wear, etc.
4. Normal maintenance and service items, such as light bulbs, fuses, wiper blades, lubricants, etc.
5. Motor homes on which the odometer reading has been altered.
6. Transportation to and from dealer or Fleetwood Service Center location, loss of time, inconvenience, commercial loss, loss of use, towing charges, bus fares, vehicle rental, incidental charges such as telephone calls, or hotel bills, or other incidental or consequential damages.

Some states do not allow the exclusion of limitation of incidental or consequential damages, so the above limitation exclusion may not apply to you.

This warranty gives you specific legal rights, and you may also have other rights, which vary from state to state.

The manufacturer is not responsible for any undertaking, representation or warranty made by any dealer or other person beyond those expressly set forth in this warranty.

www.fleetwoodrv.com

Visit our website to find a dealer near you or learn more about other Fleetwood products. Or call 1-800-444-4905.

FOR CUSTOMER ASSISTANCE, call toll free 24 hours a day at 1-800-322-8216, visit our website, or you may write to Fleetwood Enterprises, Inc., P.O. Box 7638, Riverside, CA 92513-7638.

IMPORTANT—PLEASE READ: Product information, photography and illustrations included in this publication were as accurate as possible at the time of printing. For further product information and changes, please visit our website at www.fleetwoodrv.com or contact your local Fleetwood dealer. Prices, materials, design and specifications are subject to change without notice. All weights, fuel, liquid capacities and dimensions are approximate. Fleetwood has designed its recreational vehicles to provide a variety of uses for its customers. Each vehicle features optimal seating, sleeping, storage and fluid capacities. The user is responsible for selecting the proper combination of loads (i.e. occupants, equipment, fluids, cargo, etc.) to ensure that the vehicle's capacities are not exceeded.