

Removal and Replacement of the Dometic 1292 Refrigerator – Page 1  
The Dometic 1292 in its place



Disconnecting the propane and electrical connections -



Removal and Replacement of the Dometic 1292 Refrigerator – Page 2  
Remove the lower trim piece to get at the fastening screws -



Ready to remove from the cabinet -



The "pulling mechanism" -



The fridge is out and turned 90 degrees on the supporting table -



That's where it was! Nice to be able to clean it easily -



This is what the top of the cabinet looks like -



This is the back side of the Dometic Refrigerator (the top) – notice the cooling fins at the top.





Removal and Replacement of the Dometic 1292 Refrigerator – Page 8

A close look at those cooling fins at the top show that it is time to clean them!



The old tube and sheathing with heater wire are laid free (at the ice maker) -



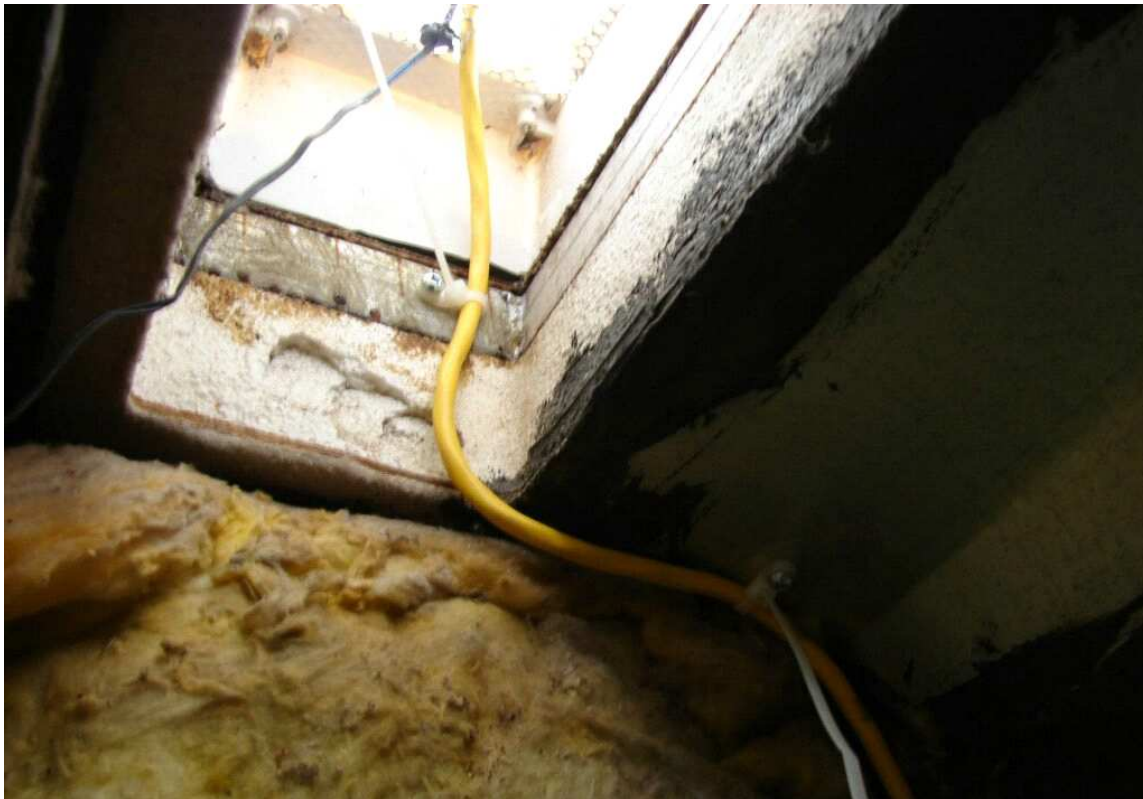


Removal and Replacement of the Dometic 1292 Refrigerator – Page 9

The new tube installed and recovered with duck tape (heater wire spliced with red connector) -



A new extra 3 core wire (the yellow cord) run up to the top vent to power muffin exhaust fans -



And now we're back in place ready to turn it back on – done!

